

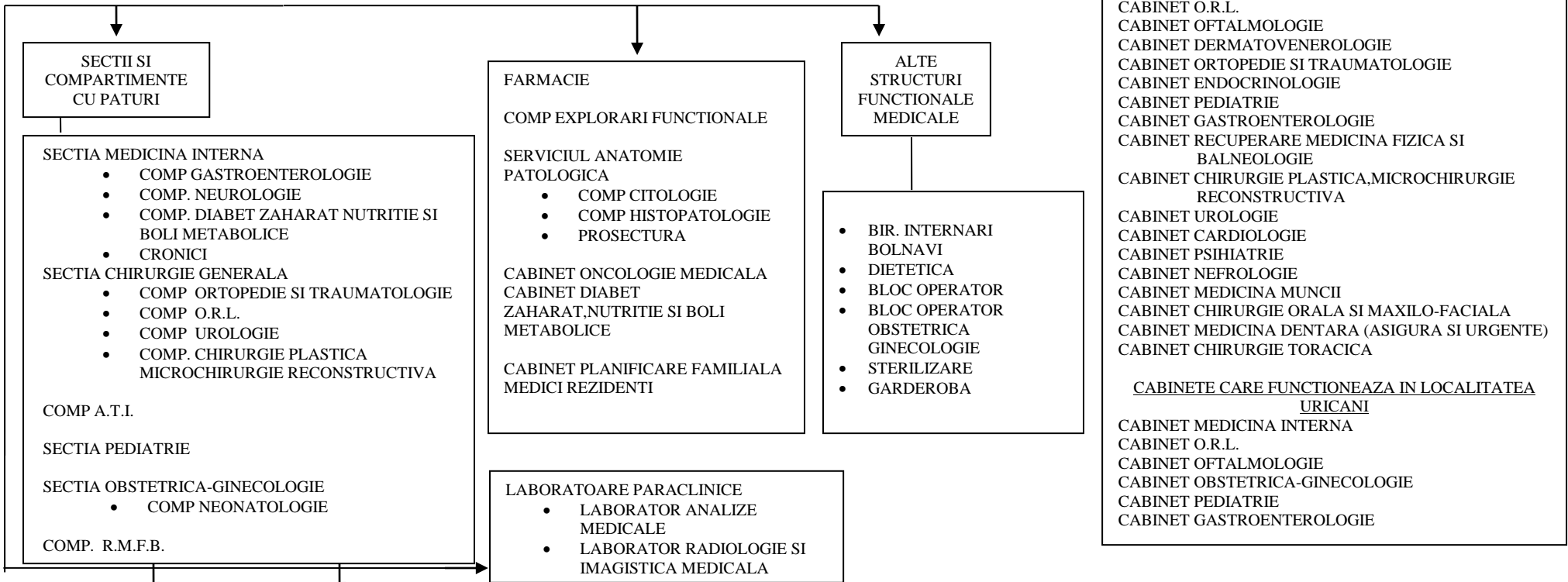
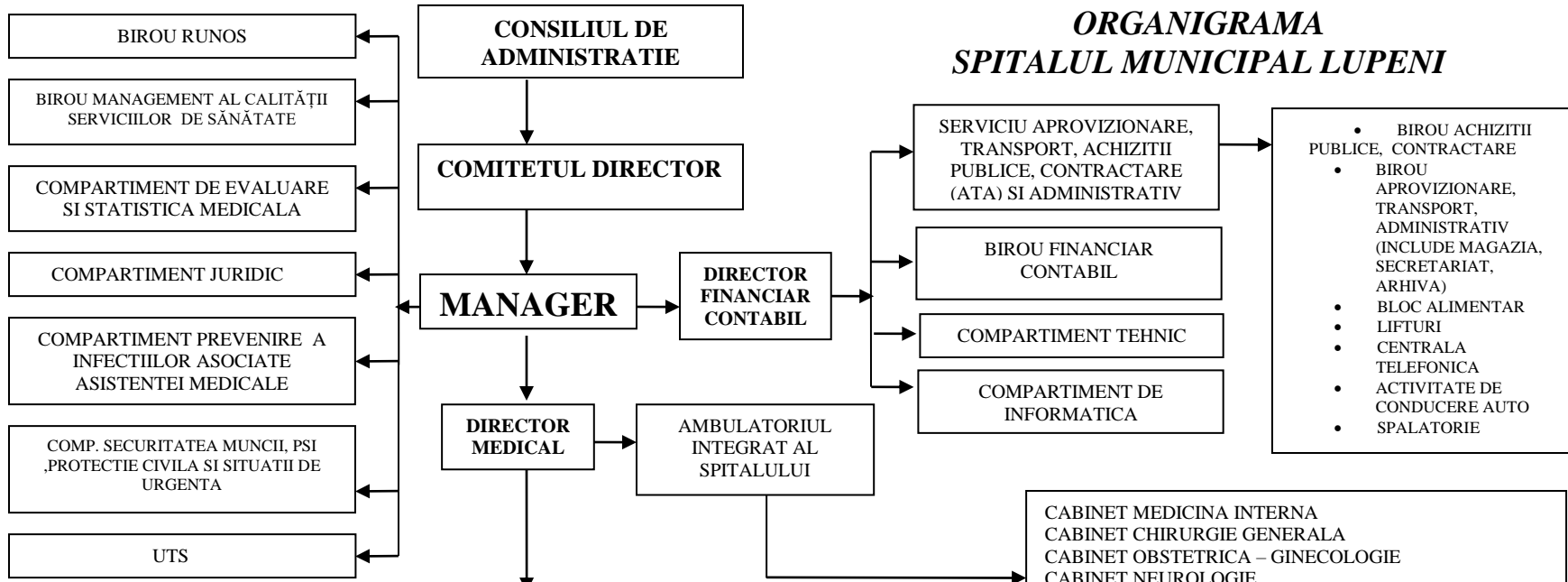
SPITALUL MUNICIPAL
LUPENI

TOTAL: 175 paturi

INSOTITORI: 12 paturi

SPITALIZARE DE ZI:
20 paturi din care :
-oncologie medicala 3 paturi

ORGANIGRAMA SPITALUL MUNICIPAL LUPENI



C.P.U.
(CU PUNCT DE LUCRU LA URICANI)

LABORATOR R.M.F.B.
(BAZA DE TRATAMENT)

Lupeni 31.08.2020